



SOUTHWEST COLLEGE OF  
NATUROPATHIC MEDICINE  
& HEALTH SCIENCES



**2019 - 2020**

DOCTOR OF  
NATUROPATHIC MEDICINE



**“Every person has a passion  
or calling to do something  
in this world. Mine is to be a  
naturopathic physician.”**

At Southwest College of Naturopathic Medicine & Health Sciences, we seek people who love science, who believe in the miracle of the human body, and who recognize that there is more to medicine than drugs and surgery. Here, you will experience the most difficult and the most exhilarating years of your life.

Exploring the human body in health and disease  
in the classroom will challenge your mind.

Restoring health in the exam room will nourish your soul.

**Pursuing your passion will change the world.**



## President's Message

Holding this view book, picture yourself starting your career in medicine at Southwest College of Naturopathic Medicine & Health Sciences. The students, faculty, patients, and researchers you encounter in the following pages offer a glimpse into the SCNM Experience. It occurs when people share a commitment to health in an environment designed to foster learning, healing, and discovery.

You may wonder, “Why is SCNM the first in naturopathic medical education to challenge conventional wisdom, invest in innovative technologies, and be the earliest adopter of new methodologies?” From its inception, SCNM always pushed the envelope with many firsts – to put course materials online, to create a career center, to adopt electronic medical records, to employ team-based learning, to have fitness and yoga facilities for students, and to build the **Neil Riordan Center for Regenerative Medicine** that focuses on regenerative therapies. Each of these exemplify the College’s continuous quest to prepare our graduates for success in a rapidly changing healthcare system.

Read on and see for yourself. Better yet, come visit and experience SCNM in person.

Yours in health,



Paul Mittman, ND, EdD  
President & CEO





## Location

Practicing medicine in Arizona allows for one of the widest scopes of practice for licensed naturopathic doctors, giving SCNM students the broadest training in all facets of naturopathic medicine.

Featured on Page 8-9

Featured on Page 20-21

## Research

Student-led research focuses on botanicals bridging the gap between naturopathic and conventional medicine. In 2020, research opportunities for students will continue to grow with the addition of the Ric Scalzo Institute for Botanical Research. This Institute will conduct analytical testing, cellular and molecular biology assays, and metabolomic testing to advance 21st century Botanical Medicine.



## Community

Enjoy a collaborative, intimate campus with the amenities of a modern campus including access to an on-site medical center, fitness center, healthy café, yoga studio, and teaching kitchen.

Featured on Page 11

Featured on Page 24-25

## Academic & Clinical Experiences

Passion for teaching and a profound belief in the medicine binds SCNM faculty. This creates a strong didactic and clinical education experience.



## Outreach

SCNM's participation in seven community clinics as well as student organizations like Naturopaths Without Borders allow students to care for underserved populations.

Featured on Page 23, 29

Featured on Page 26-33

## Career Success

SCNM has a comprehensive suite of career services available to naturopathic medical students, ensuring students have access to the most career opportunities upon graduation.





The education will change your life and the career will make the world a better place.

## Do you have the mind of a doctor and the heart of a healer? Find your future at SCNM.

SCNM prepares its students to make a difference in the ever-changing world of healthcare. From our integrated curriculum and wide scope of practice to our state-of-the-art medical center and strong sense of community, SCNM is a rich learning environment that focuses on innovation and cutting-edge research while honoring the principles of naturopathic medicine. It is a place where passionate, like-minded students, faculty, and staff come together to make a difference in people's lives.

We believe in combining the evidence-based approach of conventional medicine with time-tested natural healing therapies. Our graduates go on to establish flourishing practices, either on their own or alongside conventional medical practitioners, while simultaneously changing the way our world views healthcare.

## Student Services

At SCNM, we want your student experience to be as rewarding, fulfilling and inspiring as possible. We offer you a host of student resources to support your success while at SCNM and as you transition into the professional world.

### Student Support Center

We deliver seamless student services, from registration/records to financial aid to student accounts.

### Career Center

SCNM was the first ND school with a full-time staff member for career services. Our center provides planning, online resources such as NDjoblink.com, and connections for lifelong resources.

### Counseling

Counseling services provide short-term one-on-one counseling for a variety of student concerns including stress, anxiety, relationships, change, and more. The counselor is also available to assist in identifying long-term solutions, if needed.

### Learning Specialist

This full-time staff member provides academic support to students at SCNM via individual and group sessions in the areas of study skills assessment, test-taking strategies, and note taking.

### Advising

Our advising office offers personalized academic support.

### Financial Aid

Students receive quarterly support throughout the financial aid process.

### IT Helpdesk

We provide basic IT support for students, including access to various campus software.

### Healthcare

Students enjoy discounted services at the SCNM Medical Center and Medicinary.

### Doctoré Development Center

This formal tutoring center provides free one-on-one academic tutoring for students.

### Licensing Exams

NPLEX course review and sample test questions are available.

### Student Government Association (SGA)

The SGA ensures clear and organized communication between the student body and college Administration. SCNM supports student representation at all levels of the college.





Bustling city or silent mountains?  
Warm desert or snowy peaks?

In Arizona, the choice is yours – nowhere else  
will you find so much to choose from.

With more than 300 days of sunshine each year, Arizona is a goldmine for nature and outdoor enthusiasts. Enjoy hiking, biking, boating, swimming, golf, tennis, horseback riding, and even skiing and snowboarding during the winter months with just a short drive north to the mountains.

Take a weekend trip to Arizona destinations including Sedona, Tucson, the Grand Canyon, Mogollon Rim, and the White Mountains. Phoenix's central location also makes it easy to drive to the bright lights of Las Vegas and the beaches of southern California or Mexico in just a few hours.



# Tempe and the SCNM Campus

SCNM is situated on an eight-acre urban campus in the Greater Phoenix Metro suburb of Tempe, Arizona. SCNM shares Tempe with Arizona State University, thereby providing our students with a rich college atmosphere and an abundance of affordable housing, research, and entertainment opportunities.

Tempe is part of the Greater Phoenix Metro area in Maricopa County, one of the fastest growing counties in the country. With the largest park system in the United States, Maricopa County has 189 parks and 33,000 acres featuring a beautiful landscape for hiking, camping, cycling, climbing, and swimming.

In addition to being a vibrant, fast growing metropolitan area, Tempe is the most affordable city compared to other cities with naturopathic medical schools.

scnm.edu/virtual

Take a campus tour from anywhere!

Tempe, AZ	\$3,900
Vancouver, BC	\$4,539
Portland, OR	\$4,856
Chicago, IL	\$5,078
Toronto, ON	\$5,103
San Diego, CA	\$5,211
Seattle, WA	\$5,773

Comparison of cost of living in cities with major naturopathic medical schools. Information courtesy of Numbeo.com, January 2019.

Attend a campus tour or special event to learn how you can turn your passion into a rewarding career.

Visit [scnm.edu](https://scnm.edu) to sign up for upcoming events & receive more information.

## Community Commons: The Heart of SCNM

As a LEED Platinum Certified building, the Community Commons features multiple classrooms, the Thorne Auditorium, 18 study group rooms, teaching kitchen, café, and:

### Medicinary

The SCNM Medicinary is the largest of its kind in Arizona, carrying over 5,000 products including dry herbs, vitamins, nutritional supplements, botanicals, homeopathic remedies, and individualized botanical tinctures.

### Fitness Room & Yoga Studio

The fitness room and yoga studio are available to students with access to free weights, cardio equipment, and a power rack. The equipment in the fitness room was recommended by the Sports Medicine club.

### Library

The 4,100 square foot library houses the most complete medical databases, books, and journals available to medical practitioners.



## Naturopathic Medicine: Treat The Whole Person

Treating the whole person requires a profound understanding of the patient as an individual. Naturopathic doctors identify the underlying cause of a condition and combine the best of conventional medicine and alternative therapies to help achieve optimal health. By focusing the patient toward positive lifestyle changes, naturopathic doctors are the foremost experts in preventative medicine.

Naturopathic medicine is also on the forefront of treating chronic diseases including heart disease, cancer, and diabetes as well as non-narcotic pain management. When you become a naturopathic doctor, you will be joining a respected and financially rewarding profession helping to solve significant medical challenges and improve the lives of your patients.

If you choose to stay in Arizona after graduation, the state offers one of the largest scopes of practice for licensed naturopathic physicians. This gives naturopathic doctors prescriptive authority, the ability to administer IV-therapy, as well as practice acupuncture.

## Principles of Naturopathic Medicine

**Primum Non Nocere**  
First, Do No Harm

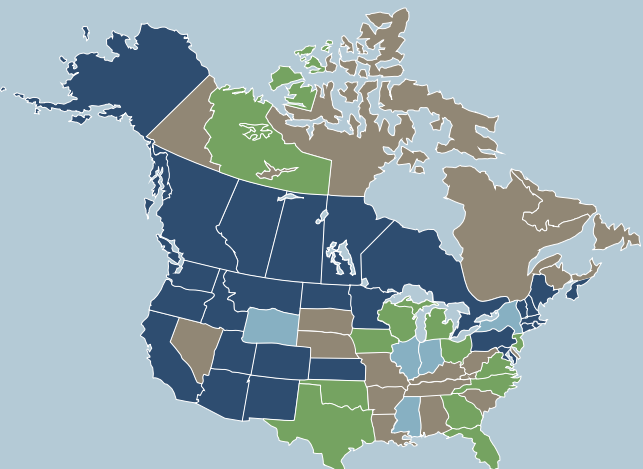
**Vis Medicatrix Naturae**  
The Healing Power of Nature

**Tolle Causam**  
Treat the Fundamental Cause

**Tolle Totum**  
Treat the Whole Person

**Docere**  
Doctor as Teacher

**Praevenire**  
Practice Prevention



- Licensed / Regulated
- Push for regulation in 2019/2020
- Not Regulated
- Bill pending in 2019

Association of Accredited  
Naturopathic Medical Colleges  
April 2019

## Achieve Success Wherever You Practice

As of August 2019, twenty-two states and five Canadian provinces regulate naturopathic medicine and license naturopathic physicians. In these areas, including Arizona and California, naturopathic physicians must pass either national or state/provincial board examinations and must have graduated from an accredited four-year, graduate level naturopathic medical school such as SCNM.

While naturopathic doctors may practice in unregulated areas, their scope of practice may vary.

## Dual Degree Opportunities

Earn a Doctor of Naturopathic Medicine degree from SCNM with either:

### Master of Science in Acupuncture (LAc)

Phoenix Institute of Herbal Medicine & Acupuncture

### Master of Public Health

University of Arizona's Mel & Enid Zuckerman College of Public Health

## A Wide Scope of Modalities & Therapies

The Doctor of Naturopathic Medicine (ND) degree program combines rigorous academic study with extensive supervised clinical practice. This on-campus, four-year program exceeds the clinical education requirements as prescribed by the Council on Naturopathic Medical Education (CNME).

Students begin by studying the biomedical sciences, principles of naturopathic medicine, and basic clinical skills. After gaining a comprehensive understanding in these areas, students progress to clinical and laboratory diagnosis, pathology, and diagnostic imaging. Students also develop a comprehensive understanding of human health, disease, and general medical practice.

**The state of Arizona** allows for one of the **widest scopes of practice** for licensed naturopathic doctors, which is one reason why SCNM students receive the broadest training in all facets of naturopathic medicine including acupuncture, the ability to administer IV therapies, and prescriptive authority.

Complementary and alternative  
medicine is expected to surpass  
\$200 billion in global market  
size within the next ten years.

GrandView Research, 2018

## Therapies Taught

Acupuncture &  
Oriental Medicine

Botanical Medicine

Environmental Medicine

Homeopathy

Hydrotherapy

Injection Therapies

IV Therapies

Mind-Body Medicine

Mindfulness Techniques

Minor Surgery

Nutrition

Pharmacotherapy

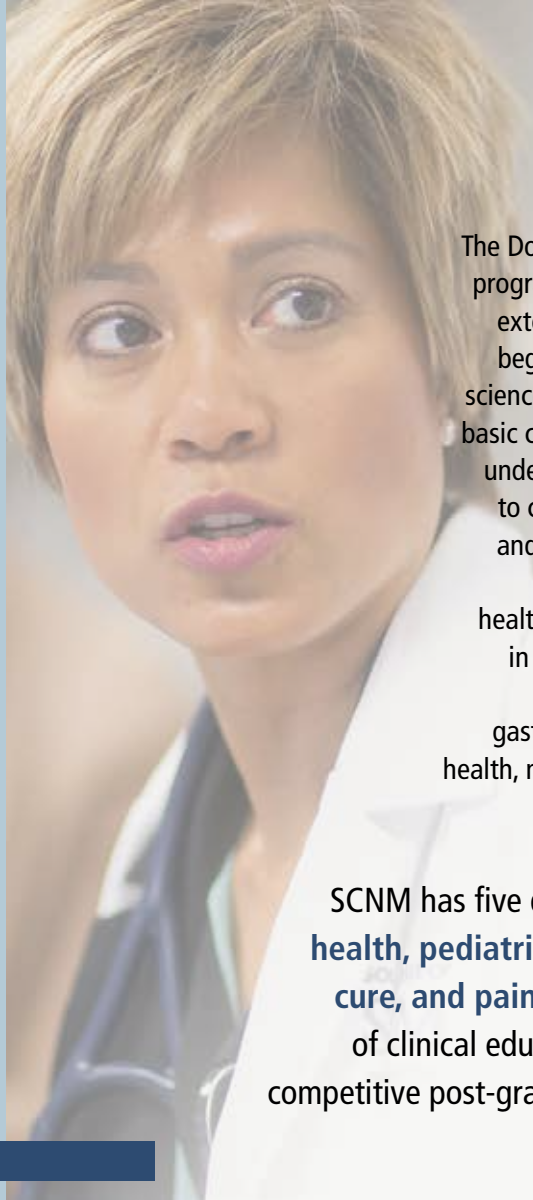
Physical Medicine

Sports Medicine



# Curriculum Highlights

- Clinical experiences start on the first day and continue throughout the curriculum
- Integration of content by body systems
- Case-based instruction and testing in preparation for Objective Structural Clinical Examination (OSCE) and NPLEX Parts I & II
- Field observation shadowing community physicians in the first two years of study
- Elective off-site program shadowing physicians in the fourth year of study
- Standardized patient program
- Honors tracks in community health, pediatrics, regenerative medicine, nature cure, and pain management
- Dedicated focus on your future career as a naturopathic doctor



# An Innovative Degree Program

The Doctor of Naturopathic Medicine (ND) degree program combines rigorous academic study with extensive supervised clinical practice. Students begin their journey by studying the biomedical sciences, principles of naturopathic medicine, and basic clinical skills. After gaining a comprehensive understanding in these areas, students progress to clinical and laboratory diagnosis, pathology, and diagnostic imaging. Students also develop a comprehensive understanding of human health and disease and general medical practice in a number of areas including cardiovascular health, dermatology, EENT, endocrinology, gastroenterology, hematology, geriatrics, men’s health, neurology, oncology, orthopedics, pediatrics, pulmonology, rheumatology, and urology.

SCNM has five distinct honors tracks in **community health, pediatrics, regenerative medicine, nature cure, and pain management**. These focused areas of clinical education can help position students for competitive post-graduate opportunities and residencies.

# Curriculum Overview - 4 Year Program of Study

YEAR 1	YEAR 2	YEAR 3	YEAR 4
<p><b>Basic Sciences</b></p> <p>Biochemistry/Medical Genetics Microbiology Immunology Anatomy &amp; Physiology Integrated Case Studies</p> <p><b>Research</b></p> <p><b>Introduction to Clinical Practice</b> Start thinking like a doctor on your first day. Year one begins with patient interviewing, ethics, jurisprudence, and community health. You’ll make oral case presentations, practice skills on one another and standardized patients, practice charting, and begin field observation.</p> <p><b>History and Philosophy of Naturopathic Medicine</b></p>	<p><b>General Medical Diagnosis</b></p> <p><b>Clinical Practice</b> Participate in the field observation program, perform physical exams on standardized patients, continue charting in the electronic health records system, and perform in-depth case analysis.</p> <p><b>Therapeutics I</b></p> <p>Botanical Medicine Environmental Medicine Homeopathy Hydrotherapy Mind-Body Medicine Nutrition Oriental Medicine Pharmacology Physical Medicine</p> <p><b>Practice Management</b></p> <p><b>NPLEX I Review Course</b> Built into curriculum at end of year 2 to help you prepare for board exams.</p> <p><b>Medicinary, Lab &amp; IV Therapy Posts</b></p> <p><b>Didactic Selectives</b></p>	<p><b>Clerkships</b> Begin practicing excellent patient care under the supervision of an attending physician.</p> <p><b>General Medical Practice</b></p> <p>Cardiovascular Health Dermatology EENT Endocrinology Gastroenterology Gynecology/Obstetrics Hematology Pediatrics Pulmonology</p> <p><b>Therapeutics II</b></p> <p>Botanical Medicine Homeopathy Mind-Body Medicine Minor Surgery Nutrition Oriental Medicine</p> <p><b>Practice Management</b></p> <p><b>Emergency Medicine</b></p> <p><b>Objective Structured Clinical Exam (OSCE)</b></p> <p><b>Didactic Selectives</b></p>	<p><b>Clerkships</b> Continue treating patients under the supervision of an attending physician.</p> <p><b>General Medical Practice</b></p> <p>Geriatrics Men’s Health Neurology Oncology Orthopedics Rheumatology Urology</p> <p><b>Therapeutics III</b></p> <p>Mind-Body Medicine Minor Surgery</p> <p><b>Practice Management</b></p> <p><b>NPLEX II Review Course</b> Built into curriculum at end of year 4 to help you prepare for board exams.</p> <p><b>Didactic &amp; Clinical Selectives</b></p>

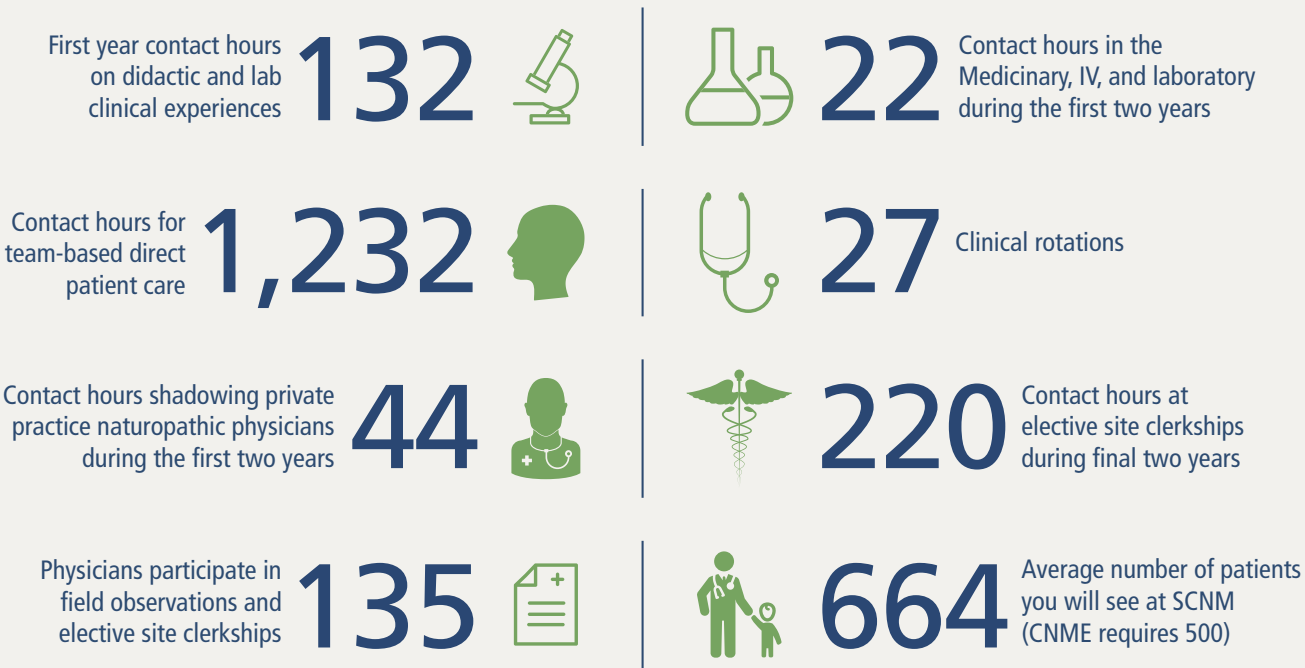
# Curriculum Overview - 5 Year Program of Study

YEAR 1	YEAR 3	YEAR 4	YEAR 5
<b>Basic Sciences</b> Anatomy & Physiology Integrated Case Studies	<b>General Medical Diagnosis</b>  <b>Clinical Practice</b> Participate in the field observation program, perform physical exams on standardized patients, continue charting in the electronic health records system and perform in-depth case analysis.	<b>Clerkships</b> Begin practicing excellent patient care under the supervision of an attending physician.	<b>Clerkships</b> Continue treating patients under the supervision of an attending physician.
<b>YEAR 2</b>	<b>Therapeutics I</b> Botanical Medicine Environmental Medicine Homeopathy Hydrotherapy Mind-Body Medicine Nutrition Oriental Medicine Pharmacology Physical Medicine	<b>General Medical Practice</b> Cardiovascular Health Dermatology EENT Endocrinology Gastroenterology Gynecology/Obstetrics Hematology Pediatrics Pulmonology	<b>General Medical Practice</b> Geriatrics Men's Health Neurology Oncology Orthopedics Rheumatology Urology
<b>Basic Sciences</b> Biochemistry/Medical Genetics Microbiology Immunology Integrated Case Studies	<b>Practice Management</b>	<b>Therapeutics II</b> Botanical Medicine Homeopathy Mind-Body Medicine Minor Surgery Nutrition Oriental Medicine	<b>Therapeutics III</b> Mind-Body Medicine Minor Surgery
<b>Research</b>  <b>Introduction to Clinical Practice</b> Start thinking like a doctor on your first day. Year one begins with patient interviewing, ethics, jurisprudence and community health. You'll make oral case presentations, practice skills on one another and standardized patients, practice charting and begin field observation.	<b>NPLEX I Review Course</b> Built into curriculum at end of year 3 to help you prepare for board exams.	<b>Practice Management</b>  <b>Emergency Medicine</b>  <b>Didactic Selectives</b>	<b>Practice Management</b>  <b>Didactic &amp; Clinical Selectives</b>  <b>NPLEX II Review Course</b> Built into curriculum at end of year 5 to help you prepare for board exams.
<b>History and Philosophy of Naturopathic Medicine</b>	<b>Medicinary, Lab &amp; IV-Therapy Posts</b>  <b>Didactic Selectives</b>		

# Clinical Education by the Numbers

Clinical training at SCNM is designed with the goal of providing an intuitive progression of medical education. Our demanding program exceeds the clinical education requirements as prescribed by the Council of Naturopathic Medical Education (CNME).

While at SCNM, you will experience:





## Recent Publications

### Identification of botanicals with potential therapeutic use against methicillin-resistant *Staphylococcus aureus* (MRSA) infections.

*Staphylococcus aureus* is an opportunistic pathogen. Over and improper use of pharmaceuticals against *S. aureus* has led to the development of antibiotic resistance, including methicillin-resistant *S. aureus* (MRSA). Our research has examined the efficacy of botanical extracts as an alternative form of treatment to *S. aureus* and MRSA, including penicillin/methicillin resistant *S. aureus* (PenR), and multi-drug resistant *S. aureus* (MDR). Initial screening of botanicals was done via a minimum inhibitory concentration procedure. In addition, a temporal growth curve was performed in order to quantify the growth of the bacteria in the presence of the extracts. Results demonstrated 13 botanicals that had varying activities against *S. aureus*, PenR, and MDR. These results propose botanical-derived antimicrobial extracts that may be utilized against *S. aureus* and different antibiotic resistant strains of MRSA.

### Non-enzymatic anti-bacterial activity of honey based on floral origin.

Honey has been revered for its medicinal properties for thousands of years, with ancient medical texts claiming a wide range of clinical applications. Modern research has demonstrated a range of effects including anti-inflammation, immunomodulation, and antioxidant action, as well as anti-microbial and wound-healing properties. This has led to the proliferation of honey-based medical products and clinical applications in cases of infected wounds, burns, and diabetic ulcers with highly successful results. Our research evaluated the non-enzymatic anti-bacterial activity of honey from a variety of floral origins, mostly within North America. These results demonstrate a varying range of anti-bacterial action from several honey types based on floral origin against a variety of pathogenic bacteria, independent of pH, osmosis, and enzyme activity.

### Characterization of the activity of the Pitcher plant against human papilloma virus and associated cancers.

Our research has demonstrated that the botanical, *Sarracenia purpurea* (Pitcher plant), has antiviral activity against human papilloma viruses. An ongoing project is to decipher the mechanism and target of this herb toward the replication cycle of these viruses. Current results suggest that *S. purpurea* inhibits viral transcription resulting in a lack of mRNA synthesis. Notably, the precise target of action appears to be a cellular cyclin-dependent kinase required by the virus during the replication process. Based on this research, we have created a botanical formulation based which has been effective in the treatment of various HPV-associated cancers including actinic keratosis and squamous cell carcinoma, as well as common warts.

## Research at SCNM: Shaping the Future of Medicine



“The Ric Scalzo Institute for Botanical Research will advance 21<sup>st</sup> century botanical medicine through innovative scientific exploration grounded in clinical herbalism’s rich tradition. Our mission is inspired by nature to create novel botanical solutions that support people, planet, and plants. Unlike any other naturopathic institution, the Research Institute’s analytical and bioassay laboratories will elucidate the mechanism of action of botanicals, optimize botanical extraction methodology, identify active constituents, and add

quality control for botanical therapies. By deciphering the specific mechanism of action of herbs, novel botanical blends will be designed and traditional formulas optimized to target different aspects of diseases. Our research team, which includes SCNM students, will broaden our understanding and discovery of new botanical therapies for a multitude of global health concerns, as well as provide students with opportunities to sharpen their critical thinking skills, offering unique insights in the realm of botanical therapies and exposure to career opportunities.”

- Dr. Jeffrey Langland, PhD  
Professor of Research Chair, Department of Research

“I always try to expand my knowledge, and SCNM is a progressive school with a bigger vision to bring naturopathic



medicine into the mainstream. Also, I was impressed that SCNM’s research department focused on viruses that impact oral health.

In particular, their work on botanical treatments for the Herpes Simplex Virus relates to my profession as a component of oral medicine, and I look forward to other advancements of botanicals in oral medicine research.”

- Dr. Dharti Patel,  
ND, DMD, FDS RCS(Ed)  
SCNM Alumna

## Ric Scalzo Institute for Botanical Research

Thanks to a generous donation, SCNM will open the Ric Scalzo Institute for Botanical Research in 2020. The Institute’s mission is to understand how traditional plant medicines operate on a cellular level in order to create novel botanical solutions that support people, planet, and plants.

For the past 18 years, the SCNM Research Department has explored the molecular biology of medicinal plants. This work includes a 5-year study on *Echinacea* species that elucidated its immunological and anti-inflammatory effects and discovered the responsible constituents. In recent years the Department, headed by Dr. Jeffrey Langland and supported by SCNM students, has conducted, presented, and published research on the anti-viral properties of carnivorous and non-carnivorous plants, immune cell and cytokine regulation by *Astragalus* and *Echinacea* species, compared and contrasted the anti-bacterial activity of honey varieties, essential oils, and colloidal silver, and identified and evaluated anti-bacterial and anti-fungal herbs, including those against antibiotic resistant micro-organisms. The Department is developing a tissue-culture model to study the epigenetic effects of botanicals to evaluate and compare the cellular responses to a variety of *Cannabis*/hemp cultivars and botanicals involved in improved skin care and health.

The Institute will build upon the molecular biology research with the addition of analytical and isolation laboratories. These laboratories, combined with the clinical expertise and knowledge of herbalists and naturopathic physicians, will transform the understanding of botanicals. Institute research faculty and naturopathic medical students will have a world-class facility to collaborate on ground-breaking discoveries using medicinal plants. Visit: [www.scnm.edu/research](http://www.scnm.edu/research) to learn more about botanical research at SCNM.





## Embracing Diversity

SCNM understands that providing culturally-competent care starts in medical school. Our curriculum and community outreach programs are designed to prepare you for the ever-changing landscape of healthcare.

With students from several continents, our student body brings an array of ideals and backgrounds that all benefit the SCNM community. Our students learn from a diverse faculty that includes NDs, MDs, DCs, LAcS and PhDs. This diversity extends to our patient populations and your clinical experiences. From your experience in Naturopaths Without Borders, to training in our community clinics treating underserved populations, to monthly wellness clinics and patient visits in the medical center, you'll be exposed to patients with varying pathologies and see an array of people from different ethnic and sociocultural backgrounds. You'll also have the opportunity to travel and explore medical care in other cultures. At SCNM, you will receive the training to provide the highest quality of care to all your patients.



## Community Clinic Partners

### Changing Lives

Healthcare for women and children recovering from various types of trauma through the Phoenix Rescue Mission program.

### Hamilton Elementary School Clinic

Pediatric & Family Care for underserved students and families from the Murphy School District for the underprivileged

### Mission of Mercy

Medical mobile unit & family practice for the uninsured

### Roosevelt Health Center

Pediatric and family care for underserved students and families from the Roosevelt School District

### Sojourner Center

Women & pediatrics healthcare for victims of domestic violence

### Southwest Center for HIV/AIDS

HIV/AIDS treatment center

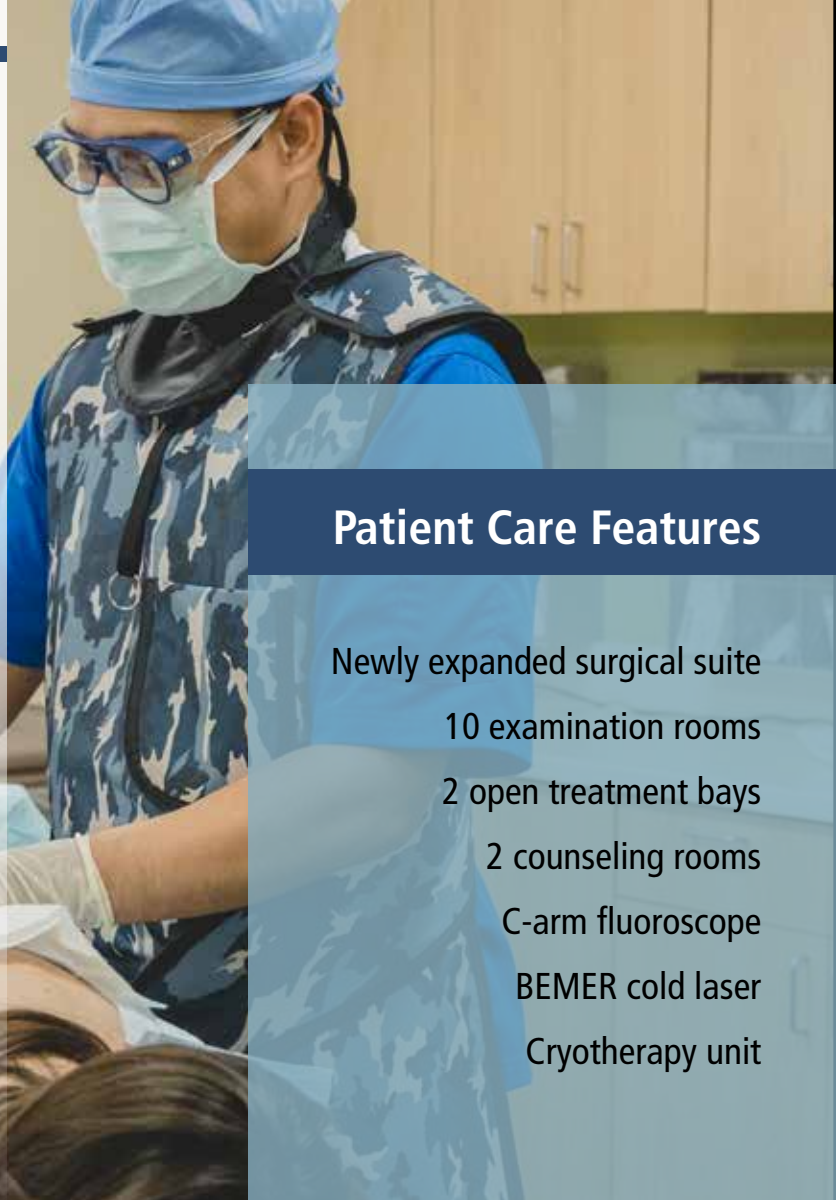
### WAHI Center

Substance abuse rehabilitation center



# Neil Riordan Center for Regenerative Medicine

For two generations the name Riordan has been synonymous with medical advances harnessing the body’s innate healing ability. Neil Riordan Center for Regenerative Medicine is building on this legacy, turning the tide from symptom suppression to regeneration and healing. Opened in late 2018 and replacing the Pain Relief Center, the Neil Riordan Center for Regenerative Medicine is located in a 6,200-square foot space on the ground floor of the SCNM Community Commons building. Through patient care, research, and medical education, the Neil Riordan Center for Regenerative Medicine is helping to usher in a new era of non-opoid approaches to treating pain and chronic disease.



## Patient Care Features

- Newly expanded surgical suite
- 10 examination rooms
- 2 open treatment bays
- 2 counseling rooms
- C-arm fluoroscope
- BEMER cold laser
- Cryotherapy unit



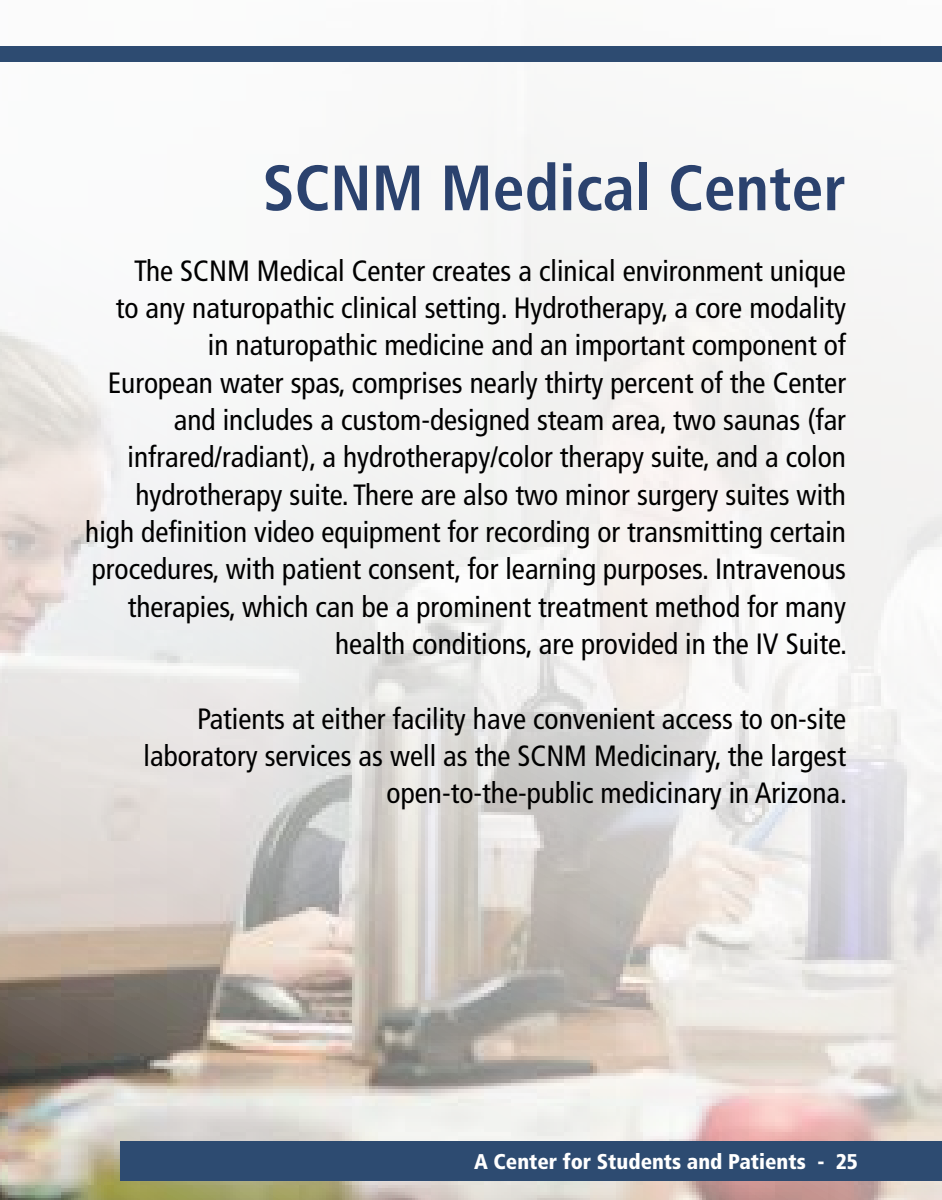
## Patient Care Features

- Newly expanded surgical suite
- 27 examination rooms
- Minor surgery suite
- IV therapy suite
- Hydrotherapy suite

# SCNM Medical Center

The SCNM Medical Center creates a clinical environment unique to any naturopathic clinical setting. Hydrotherapy, a core modality in naturopathic medicine and an important component of European water spas, comprises nearly thirty percent of the Center and includes a custom-designed steam area, two saunas (far infrared/radiant), a hydrotherapy/color therapy suite, and a colon hydrotherapy suite. There are also two minor surgery suites with high definition video equipment for recording or transmitting certain procedures, with patient consent, for learning purposes. Intravenous therapies, which can be a prominent treatment method for many health conditions, are provided in the IV Suite.

Patients at either facility have convenient access to on-site laboratory services as well as the SCNM Medicinary, the largest open-to-the-public medicinary in Arizona.





## Graduate Success

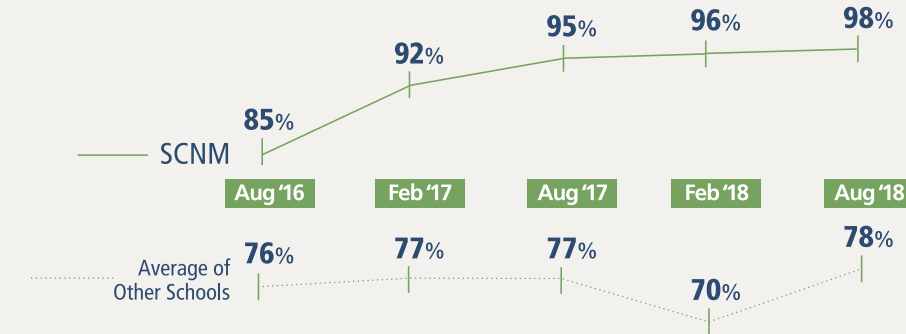
Equipped with a broad understanding of both evidence-based science and naturopathic principles, you'll transition from being a student to practicing naturopathic clinician, researcher, nutraceutical engineer, public health professional, or educator. Regardless of your path, you are entering a dynamic profession that is rapidly growing and transforming.

### Dr. Meghna Thacker

Naturopathic Physician

Amazon Best-selling Author of  
"Seven Steps to Heal your Thyroid"

**Class of 2007**



## 98% NPLEX Part 1 Pass Rate

SCNM students have significantly outscored the average all-school pass rate since 2016. NPLEX Part 1 focuses on biomedical sciences and is typically taken after the second year of coursework.

Information courtesy of the North American Board of Naturopathic Examiners (NABNE) from August 2018.

### NPLEX Exam Preparation

SCNM includes NPLEX preparation in the curriculum. The NPLEX is a two-part exam. The first part focuses on Biomedical Sciences and is taken after the second year of coursework. The second part is focused on Core Clinical Sciences and is taken after graduation.

### Career Services

With the help of our career services department, students have many resources to assist them on their journey to becoming NDs. We help students gain networking opportunities, receive help with resume writing and creating business plans. Students have access to job boards and conferences, speaker series and business classes, plus SCNM's NDjoblink.com, the first naturopathic doctor-focused job search site.





# 2018-2019 Overall Student Profile

## Student Population

International - 5%  
6 Different Countries

Eastern - 12%

Western - 19%

Midwest - 10%

Southwest - 42%

Southern - 12%

## Ethnicity

White

56%

Hispanic Latino

14%

Asian

12%

Black African American

11%

2+ Races

3%

Unknown

3%

Native Indian or Alaskan Native

1%

30  
Average Age



Male  
20%

Female  
80%

## Undergrad Degrees

Behavioral & Health Sciences

Biology or Life Sciences

Physical Sciences

Liberal Arts

Business



## Student Organizations

Students are active in clubs and are leaders in the development of new organizations. As of December 2018, SCNM students are active in 21 student organizations including:

Applied Kinesiology

Botanical Medicine Club

Naturopathic Advocacy and Community Awareness Team

Naturopaths Without Borders  
(Founded at SCNM)

Naturopathic Medical Student Association  
(Founded at SCNM)

Sports Medicine Club

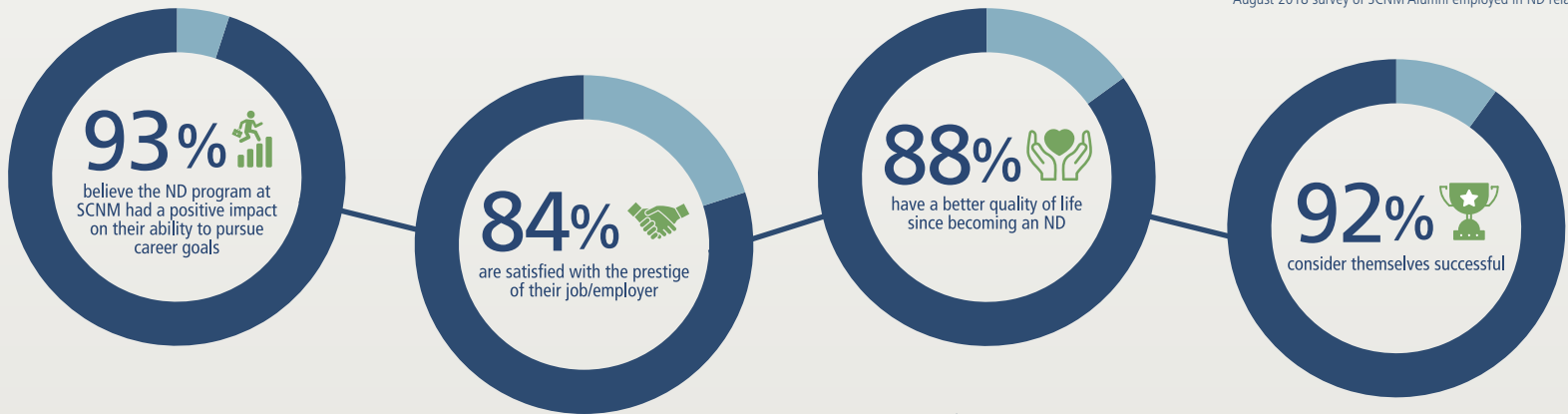
Student Veterans of America



# Discover the Physician Within You and Change the World Around You

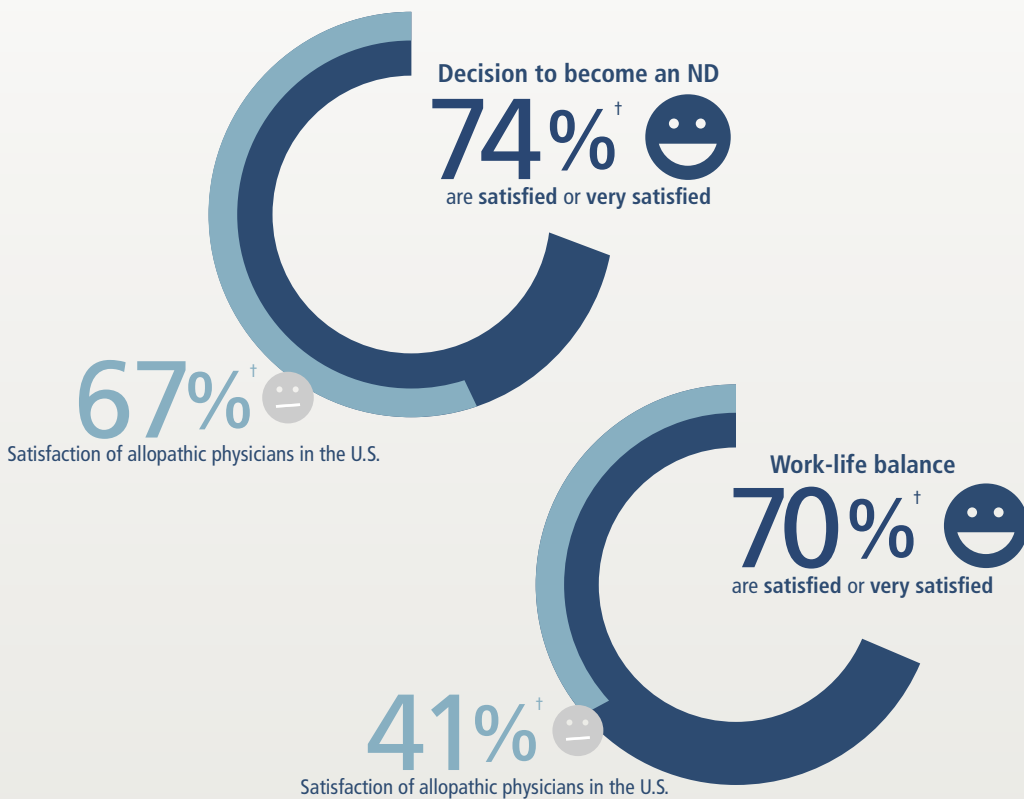
## SCNM Alumni

August 2018 survey of SCNM Alumni employed in ND related field.

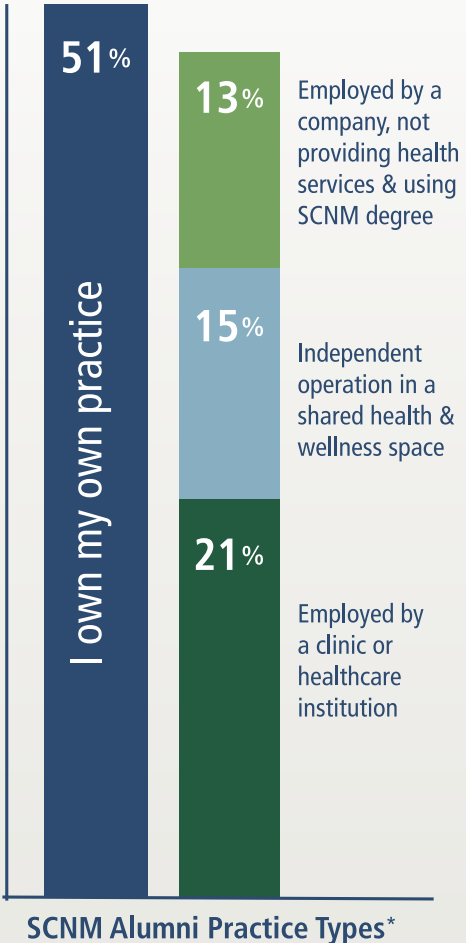


\*Scaled responses summarized for illustrative purposes. SCNM does not guarantee job placement upon graduation. SCNM is a tax-exempt, not-for-profit corporation accredited by the Higher Learning Commission, [www.hlcommission.org](http://www.hlcommission.org), and approved to offer degrees by the Arizona State Board of Private Postsecondary Education. SCNM's ND program is accredited by the Council on Naturopathic Medical Education (CNME), [www.cnme.org](http://www.cnme.org).

## High Job Satisfaction



Source: Medscape, 2015. Physician Compensation Report.  
 \* AANMC 2016 Graduate Success and Compensation Study.  
 † of all survey respondents.





## Featured Alumni



### Danielle Lewis, ND

Dr. Danielle Lewis is skilled in treating common conditions that affect women of all ages. She is certified in Holistic Pelvic Care (TM), which is a technique she uses to help women with pelvic pain, incontinence, postpartum healing, and painful sex. Dr. Lewis conducted medical research on the clinical applications and effectiveness of botanical therapies in treating common digestive issues such as SIBO. She is skilled in acupuncture and other pain management therapies. Dr. Lewis combines her background in physical therapy with her knowledge of injection techniques that restore normal function and decrease pain in joints.

Dr. Lewis attained her degree from Southwest College of Naturopathic Medicine and has a bachelors degree from Old Dominion University in Health Science and Management. After graduating from naturopathic medical school, Dr. Lewis completed 2 years of residency in Phoenix, AZ in a setting that focused on women's medicine and primary care. After completing residency, she started her own practice called Harmony Medical Group.

Class of 2013



### Steven Sorr, NMD

Dr. Steven Sorr is a highly recognized naturopathic physician who loves sharing his passion and expertise for living a healthy life blending modern science and traditional wisdom. He holds faculty positions at ASU as a Pre-Health Internship Preceptor and teaches nutrition, anatomy, and physiology for yoga teaching training programs here in the Valley. He has been featured in local news media as well as high-profile venues speaking on both regenerative and functional medicine.

Dr. Sorr is the founder and medical director at Source of Health as well as medical director for Bodify, the #1 cool sculpting boutique in the Southwest. He is an alumnus of both Southwest College of Naturopathic Medicine and Arizona State University. In addition to his medical career, he is a yoga instructor at The Village Health Club and a former Le Cordon Bleu trained Chef. Dr. Sorr brings years of experience across many fields to the table when approaching patient care and is proud to offer safe and effective solutions to common healthcare concerns without drugs or surgery.

Class of 2014

### Spice Lussier, ND

Dr. Spice Lussier is not only a Naturopathic physician but also a leader in her industry whose passion is to provide state-of-the-art care to her patients and coach fellow NDs on how to grow their practice and thrive. She is the owner of Desert Wellness Center, as well as ND Catalyst, her proven, practice-building coaching program.

But how did this all start for Dr. Lussier? While pursuing a career in allopathic medicine, she observed a typical HMO office and felt there must be something more to medicine than just spending ten minutes with a patient and writing a prescription.

In 2002 she attended Discovery Day at Southwest College of Naturopathic Medicine where she learned about the naturopathic philosophy and approach to disease and immediately knew this was her path.

Having practiced now for the past twelve years, Dr. Lussier still enjoys the challenge and reward of providing naturopathic care to her community. When she is not at her medical practice, you will likely find her in the toughest but most rewarding role of all—being mom to her two young children.

Class of 2006



# Prerequisite Coursework

To enroll at SCNM, prospective students must complete a baccalaureate degree from an accredited four-year college or university as well as have completed the required prerequisite coursework with a minimum GPA of 3.0.

We encourage applicants to send unofficial transcripts for a free prerequisite evaluation.  
Email your unofficial transcripts to **admissions@scnm.edu** and include your **full name, mailing address, and phone number**.

Subject	Semester Credits	Quarter Credits	Notes
Biology	12	18	Courses with lab for science majors
Organic Chemistry	3	4.5	Courses with lab for science majors
Biochemistry or Organic Chemistry II	3	4.5	Course for science majors. Lab optional.
Psychology	3	4.5	Developmental Psychology recommended.
English	6	9	Three (3) English composition credits required.
Humanities	6	9	Acceptable coursework includes philosophy, art, history, foreign language, religion, women’s studies.

This list indicates **minimum requirements** for prerequisite coursework, and it should not be inferred that admission is guaranteed for any applicant who meets these requirements. Applicants with science courses older than seven (7) years must demonstrate competency in the discipline(s) in question and will be evaluated on a case-by-case basis.

# Application Process

Applicants are considered on the basis of academic performance, occupational history, professional potential, maturity, concern for others, and an appreciation of natural medicine.

SCNM accepts applications on a rolling basis for both spring and fall classes.

Application requirements, deadlines, and a link to SCNM’s application are available at **www.scnm.edu/admissions/requirements** or by calling **888.882.7266**

Applications may be submitted online via the Doctor of Naturopathic Medicine Centralized Application Service **NDCAS.org** or to SCNM Admissions directly: **www.scnm.edu/admissions/apply**

Tuition, books, and living expenses may be covered by federal financial aid for those who qualify. Approximately 90% of SCNM students receive financial aid in the form of Federal Stafford loans. For more information on applying for financial aid, contact the SCNM Financial Aid Office toll-free at **888.882.7266** or email **financialaid@scnm.edu**

# My Application Checklist

- ☐ Application submitted though **NDCAS.org** or **www.scnm.edu/admissions/apply**
- ☐ Non-refundable application fee of **\$115**
- ☐ Three (3) Letters of Recommendation:
  - One (1) academic
  - One (1) from a regulated healthcare professional
  - One (1) additional from either of the two categories or a past employer or volunteer supervisor
- ☐ Personal essay
- ☐ Curriculum Vitae (CV) or resume
- ☐ Transcripts from all post-secondary institutions attended
- ☐ In-person Interview





# SCNM

SOUTHWEST COLLEGE OF  
NATUROPATHIC MEDICINE  
& HEALTH SCIENCES

## OFFICE OF ADMISSIONS

2140 East Broadway Road  
Tempe, Arizona 85282

1-888-882-7266  
admissions@scnm.edu

**scnm.edu**

 /SCNMAdmissions  /SouthwestCollegeofNaturopathicMedicine  @SCNMAZ  /NaturopathicSCNM

SCNM is a tax-exempt, not-for-profit corporation accredited by the Higher Learning Commission, [www.hlcommission.org](http://www.hlcommission.org), and approved to offer degrees by the Arizona State Board of Private Postsecondary Education. SCNM's ND program is accredited by the Council on Naturopathic Medical Education (CNME), [www.cnme.org](http://www.cnme.org).

SCNM does not discriminate on the basis of race, ethnicity, gender, social-economic background, religion, sexual orientation, gender expression or identity, age, disability, veteran status, nationality, thinking styles, or life experiences in the administration of educational policies, admission policies, financial aid, employment, or any other program or activity.